

APPENDIX B

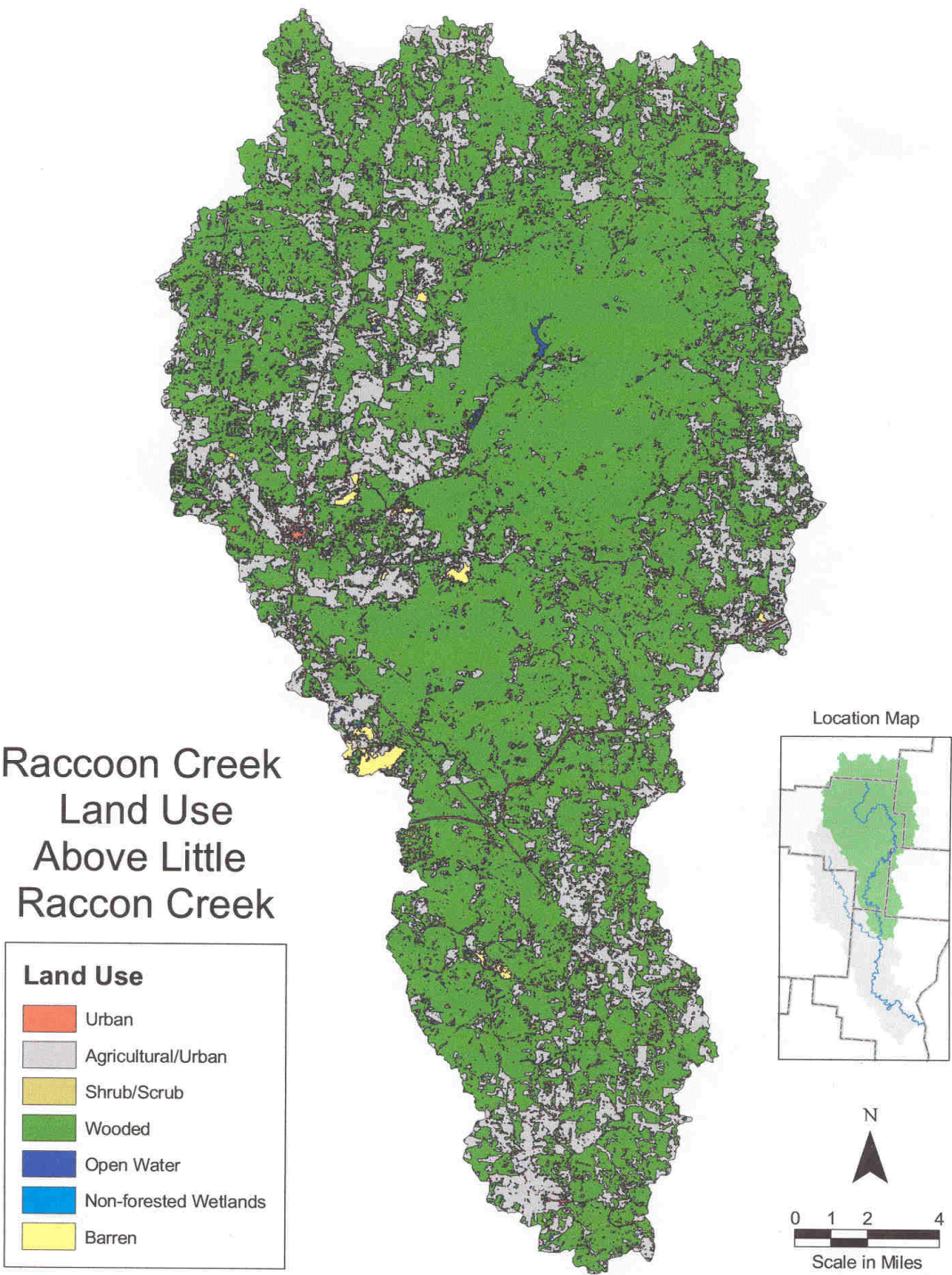
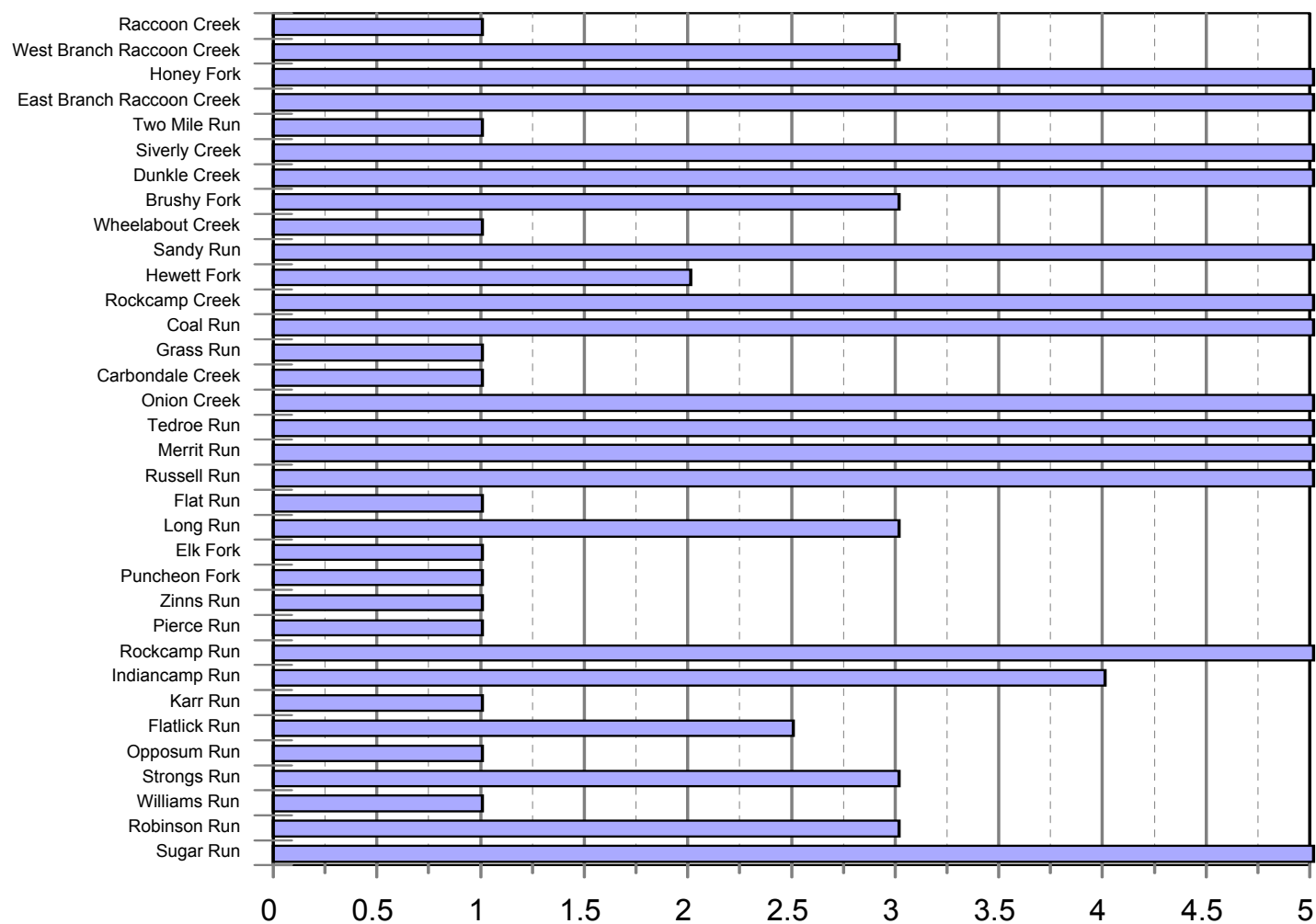


Figure 1. Land Use Map of Upper Raccoon Creek

---

UPPER RACCOON CREEK WATERSHED TMDLS



**Figure 2. Sediment Scores in Upper Raccoon Creek Basin**

---

1.0 = very embedded

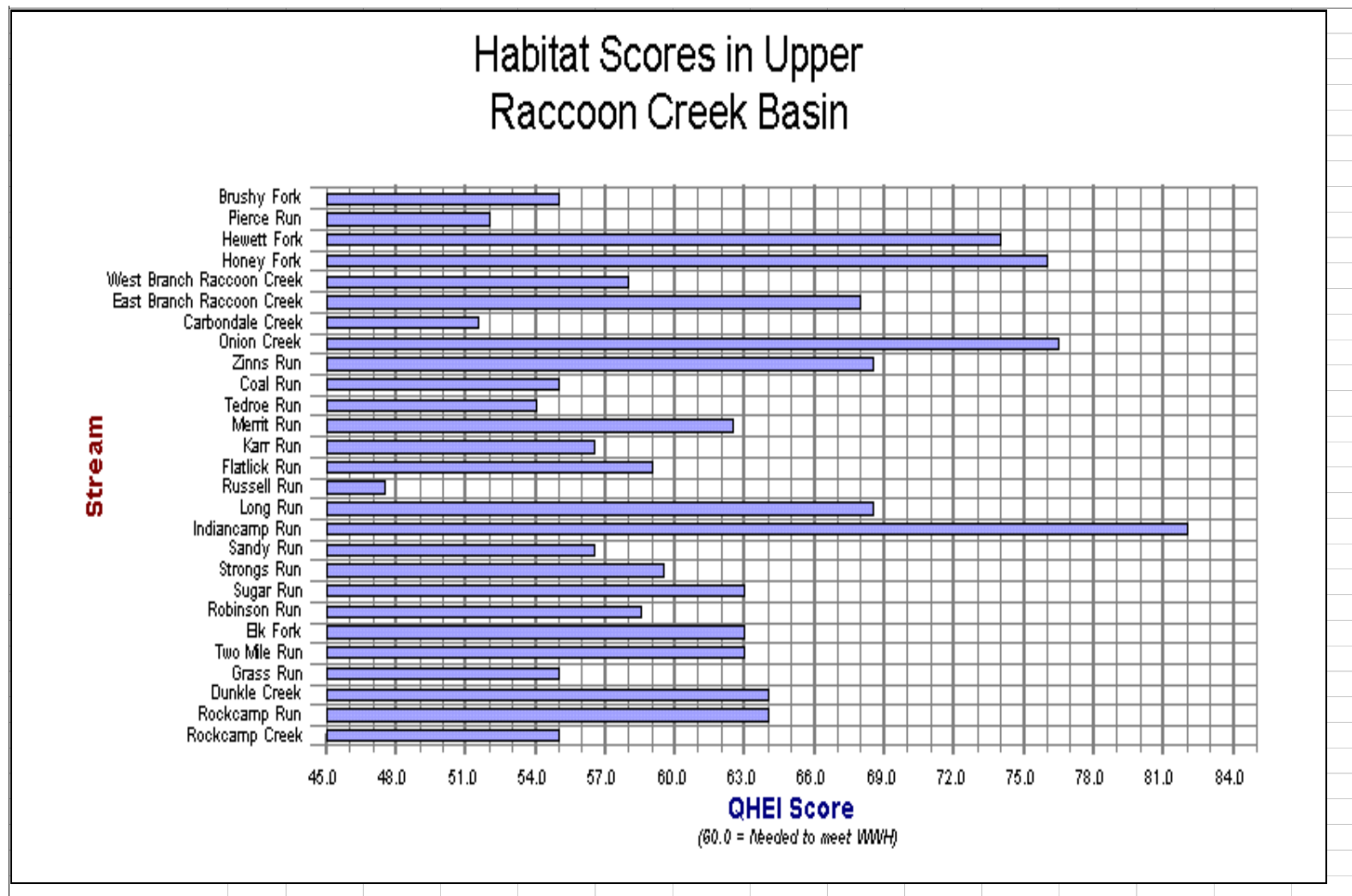


Figure 3.

# Upper Raccoon Creek Coal Mining

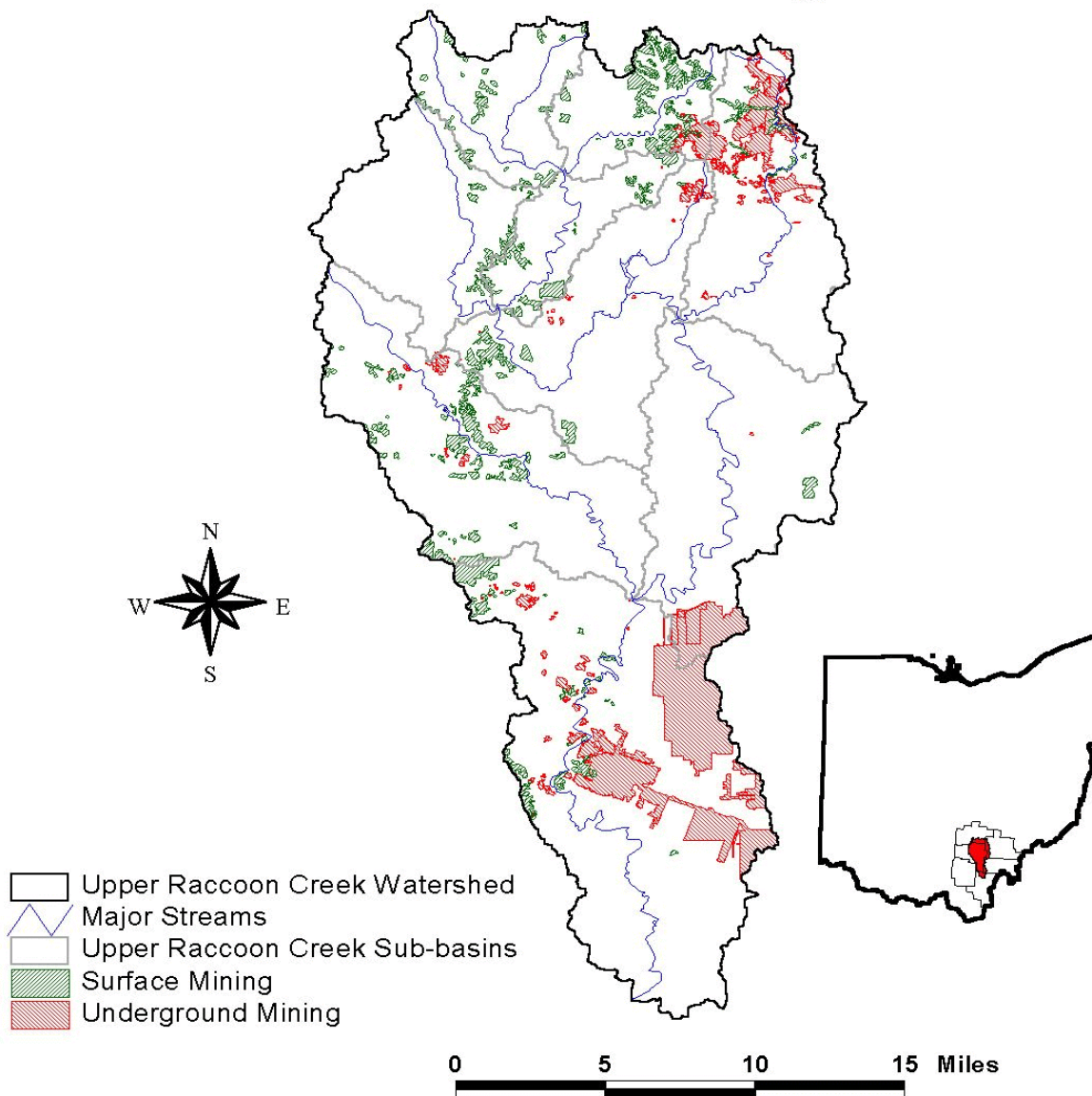


Figure 4.

## Brushy Fork and Hewett Fork Coal Mining

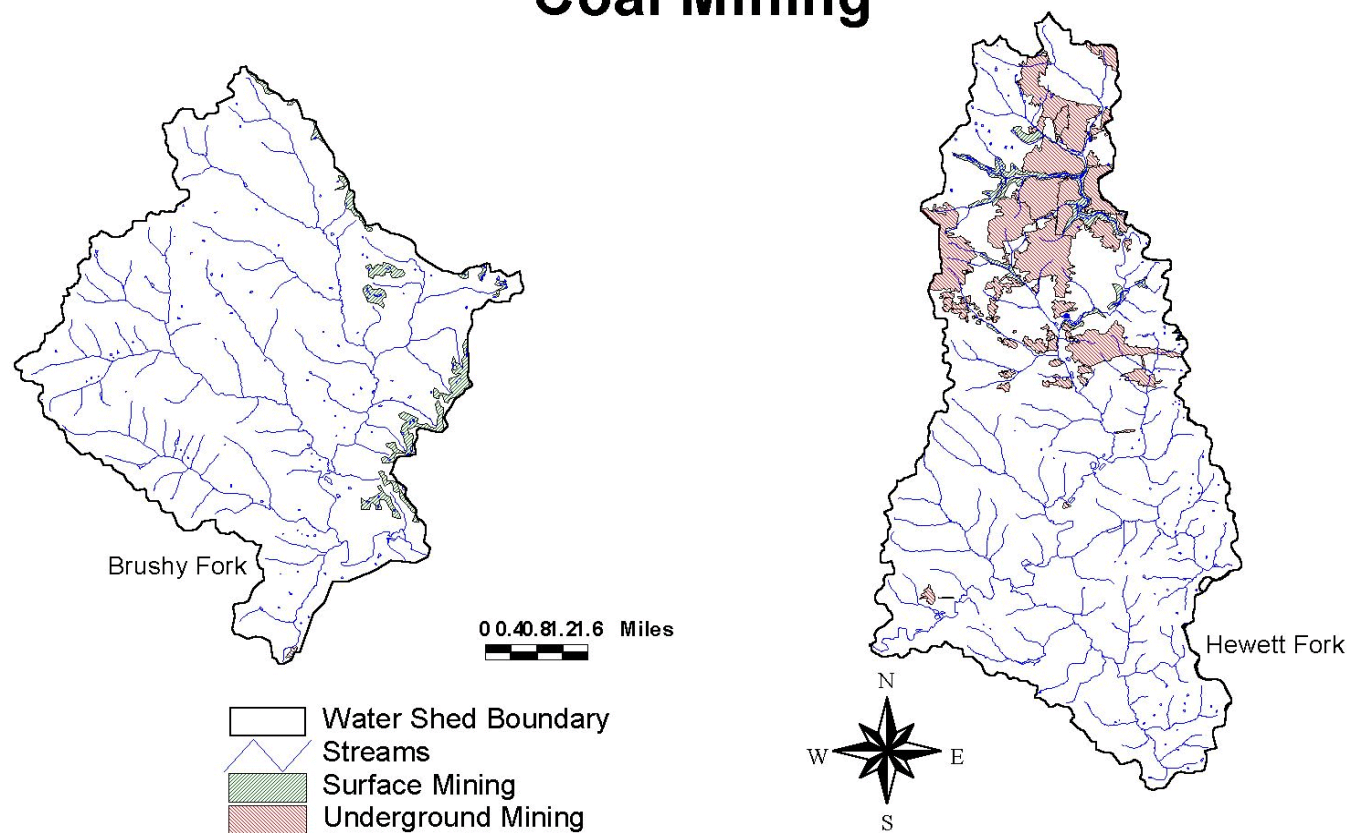


Figure 5.



## East and West Branch of Raccoon Creek Coal Mining

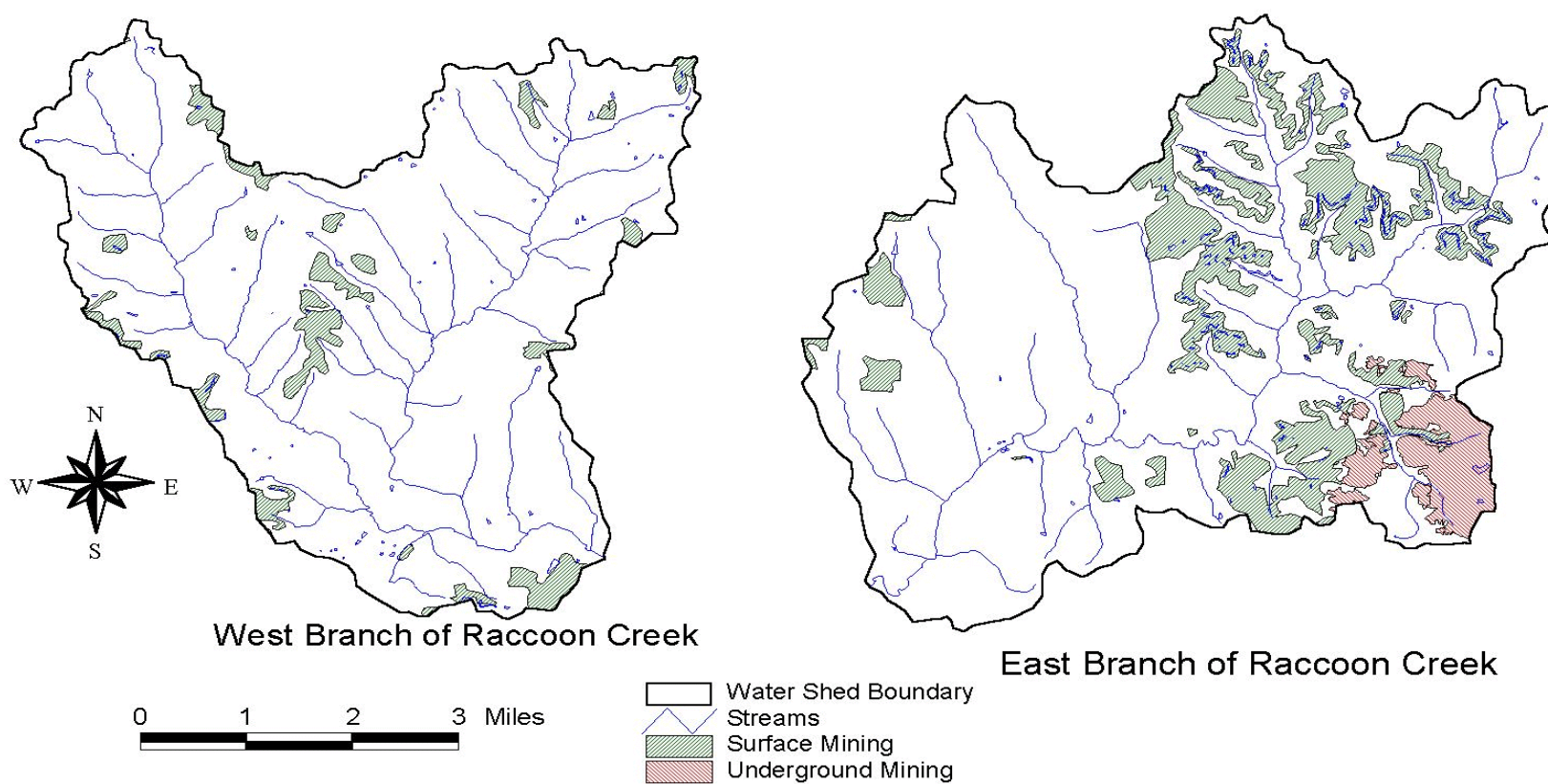


Figure 6.

**Table 1. NPDES Dischargers Within the TMDL Watershed**

FACILITY	PERMIT NO.	SUB-BASIN	DESIGN FLOW
SOCCo General Office Building	01M00003	Below Bolins Mills Raccoon Creek	4,000 gpd <sup>1</sup>
Southern Ohio Coal Co Raccoon Mine 3	01L00026	Below Bolins Mills Raccoon Creek	11,000 gpd <sup>2</sup>
ODNR Lake Hope Beach	0PP00073	Middle Section Lake Hope Raccoon Creek	3,000 gpd
ODNR Lake Hope Cabin	0PP00067	Middle Section Lake Hope Raccoon Creek	10,000 gpd
ODNR Lake Hope Lodge	0PP00066	Middle Section Lake Hope Raccoon Creek	15,000 gpd
ODNR Lake Hope Park Office	Draft	Middle Section Lake Hope Raccoon Creek	1,500 gpd
M & S Manufacturing Buckeye Automatic	0IS00020	Elk Fork	1,500 gpd
Village of McArthur WWTP	0PB00080	Elk Fork	494,000 gpd
Austin Powder Co.	01F00003	Elk Fork	2,500 gpd <sup>3</sup>

<sup>1</sup> gpd - gallons per day<sup>2</sup> Raccoon Mine #3 has an AMD plant that has a rain dependent discharge<sup>3</sup> Austin Powder Co. has 5 other small sanitary treatment plants and one rain dependent discharge**Table 2. Current Strip Mining Activity Within Upper Raccoon Creek Watershed**

Company Name	Facility Name	County	Receiving Stream	Acreage
Sands Hill Coal Co Inc	300 Pit Area	Vinton	Elk Fork	185
Waterloo Coal Co Inc	Green Pit	Vinton	Elk Fork/wheelabout Creek	315.2
Sands Hill Coal Co Inc	Elk Coal	Vinton	Elk & Puncheon Fork	156.9
Sands Hill Coal Co Inc	Sands Hill Coal Co Inc	Vinton	Ut Puncheon Fork & Elk Fork	280
Sands Hill Coal Co Inc	Circle Drive Area	Vinton	Puncheon Fork & Elk Fork	220
Waterloo Coal Co Inc	Prattsville Pitt	Vinton	Raccoon Creek	287
Sands Hill Coal Co Inc	Big Valley Mine	Vinton	Rockcamp Run	908
Waterloo Coal Co Inc	Jolly Permit	Vinton	Raccoon Creek	273
Sands Hill Coal Co Inc	Sands Hill Coal Co Inc	Vinton	Raccoon Creek	?