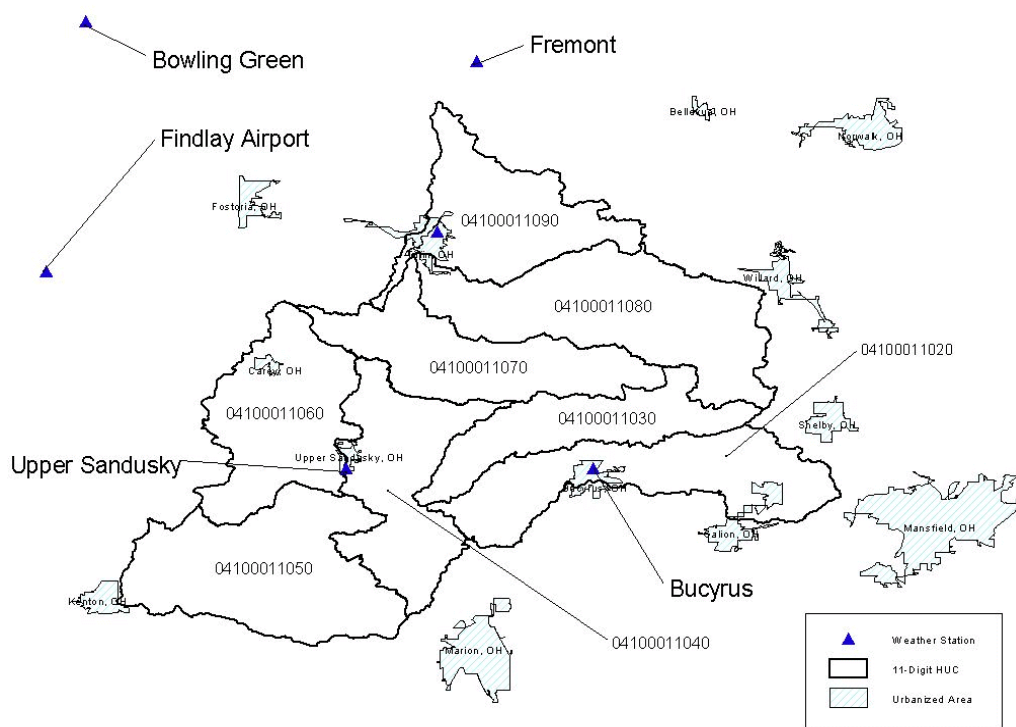


Appendix C. Use attainment maps

Maps show the location of the major tributaries in each unit and the estimated extent of the stream segments under each attainment status. Streams in full attainment are shown in blue, while those in partial and non-attainment are depicted in yellow and red, respectively.

The maps depict the attainment status regardless of the use designation. Thus, two segments in the same assessment unit can show full attainment but have different habitat quality if they have different use designations. For example, Figure 3 (Broken Sword assessment unit) is in full attainment in the headwaters (classified MWH/poorer habitat), with non-attainment near the center of the watershed (classified as WWH). See Appendix A for the applicable use designation and status within each tributary.

The monitoring stations were used to indicate boundaries between impairment levels or change in condition, even though the true hydrologic boundary may be located elsewhere.



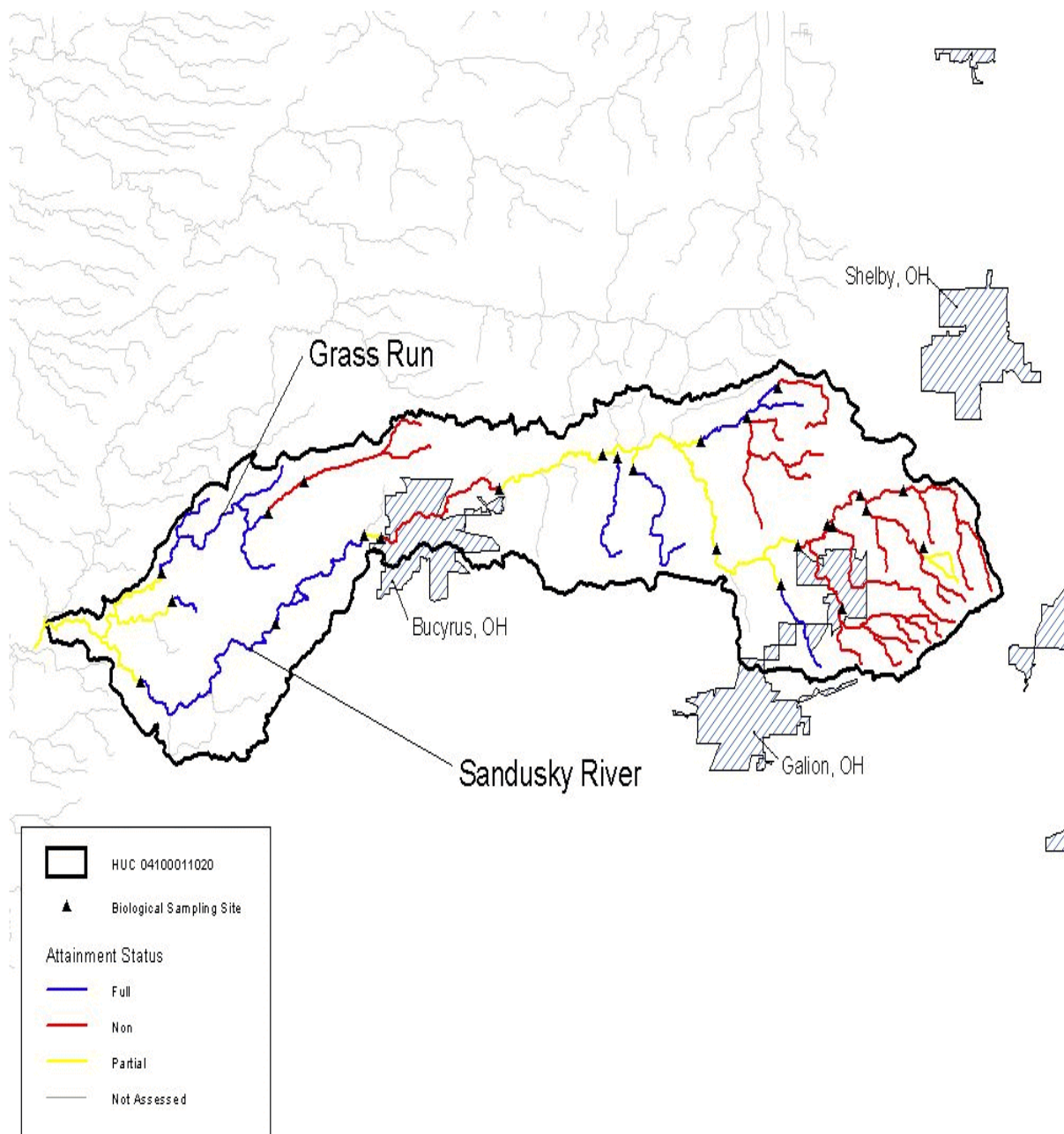


Figure 2: Bucyrus assessment unit (04100011-020)

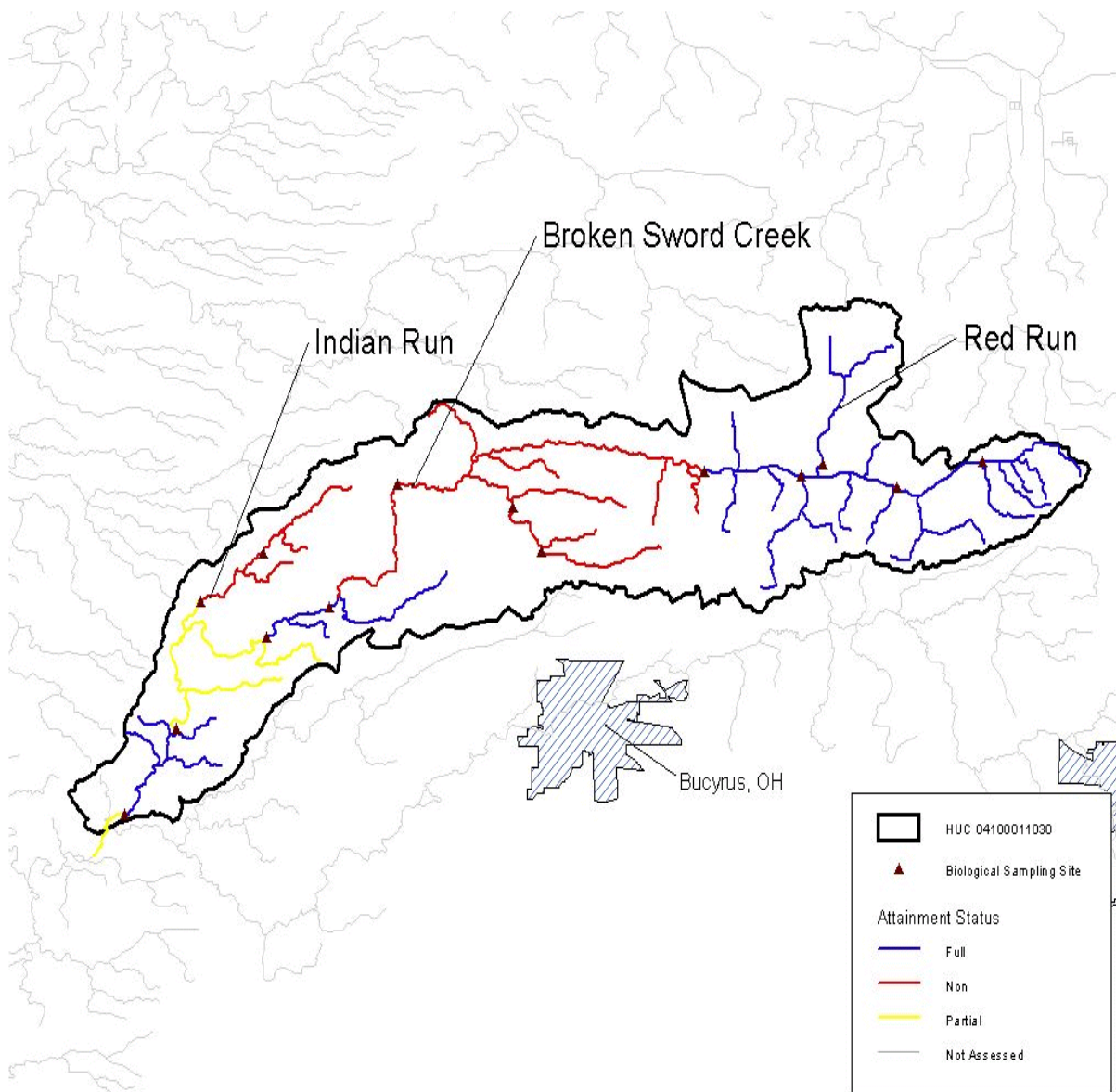


Figure 3: Broken Sword Creek assessment unit (04100011-030)

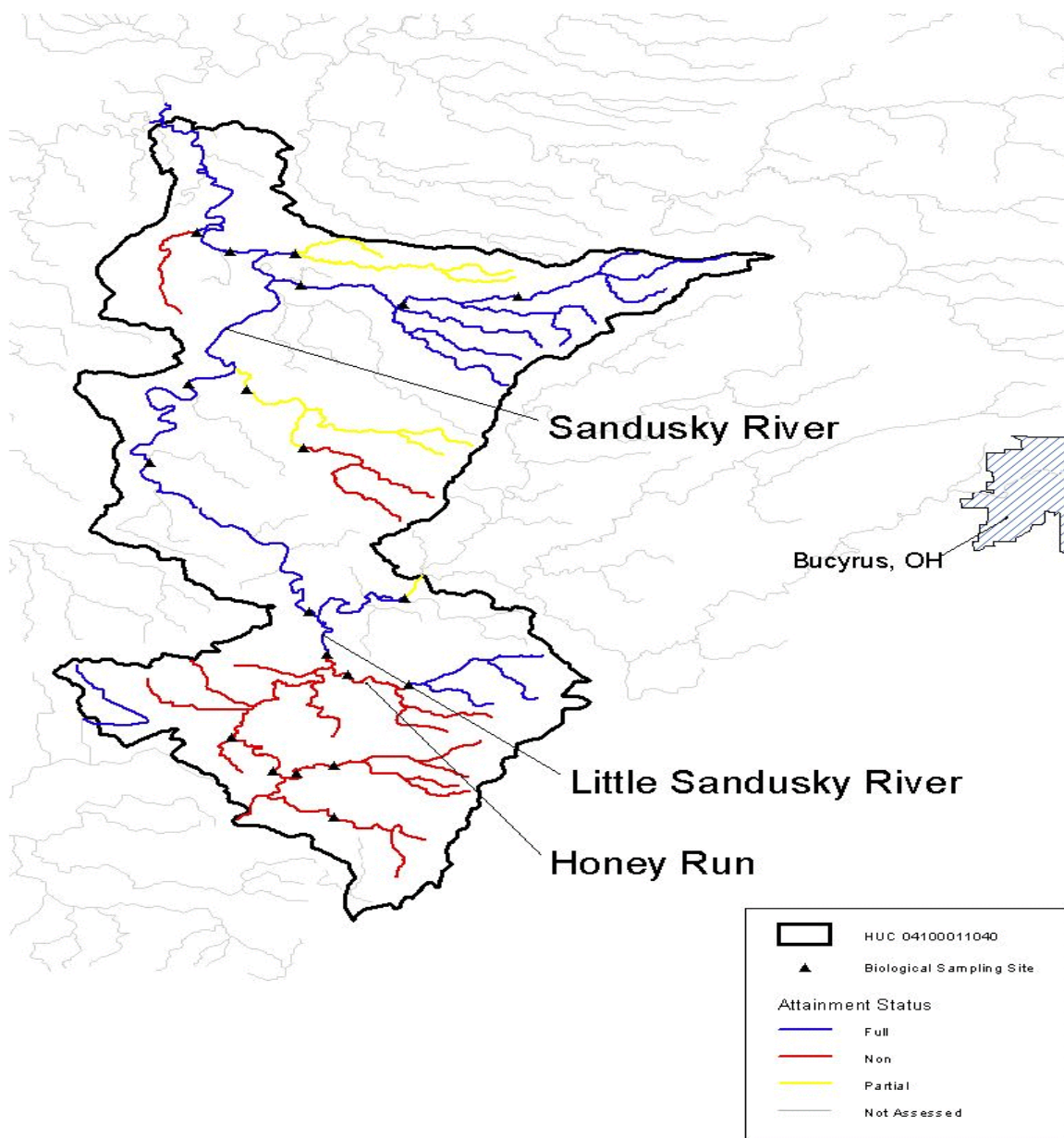


Figure 4: Upper Sandusky assessment unit (HUC 04100011-040)

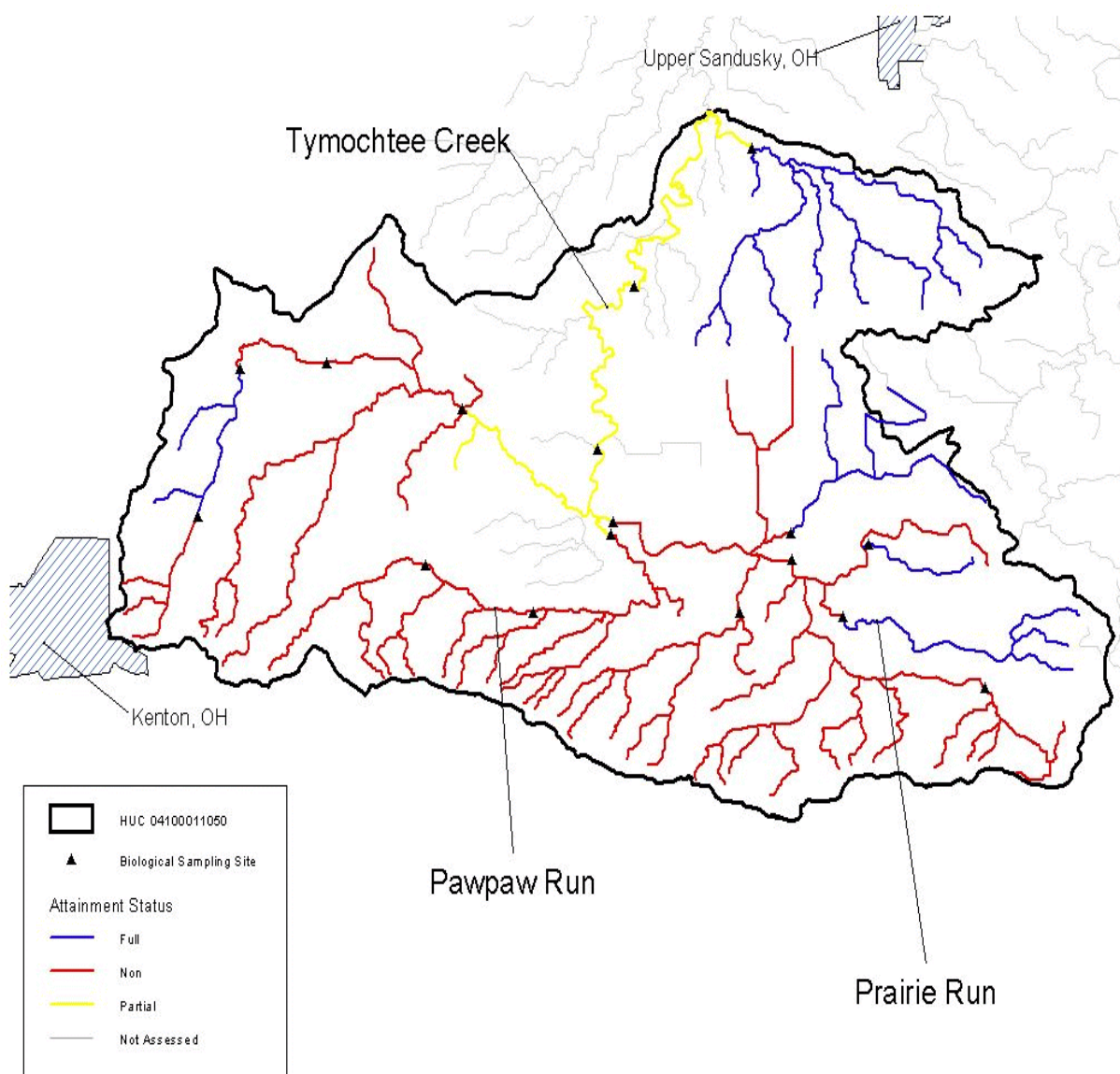


Figure 5: Upper Tymochtee Creek assessment unit (HUC 04100011-050)

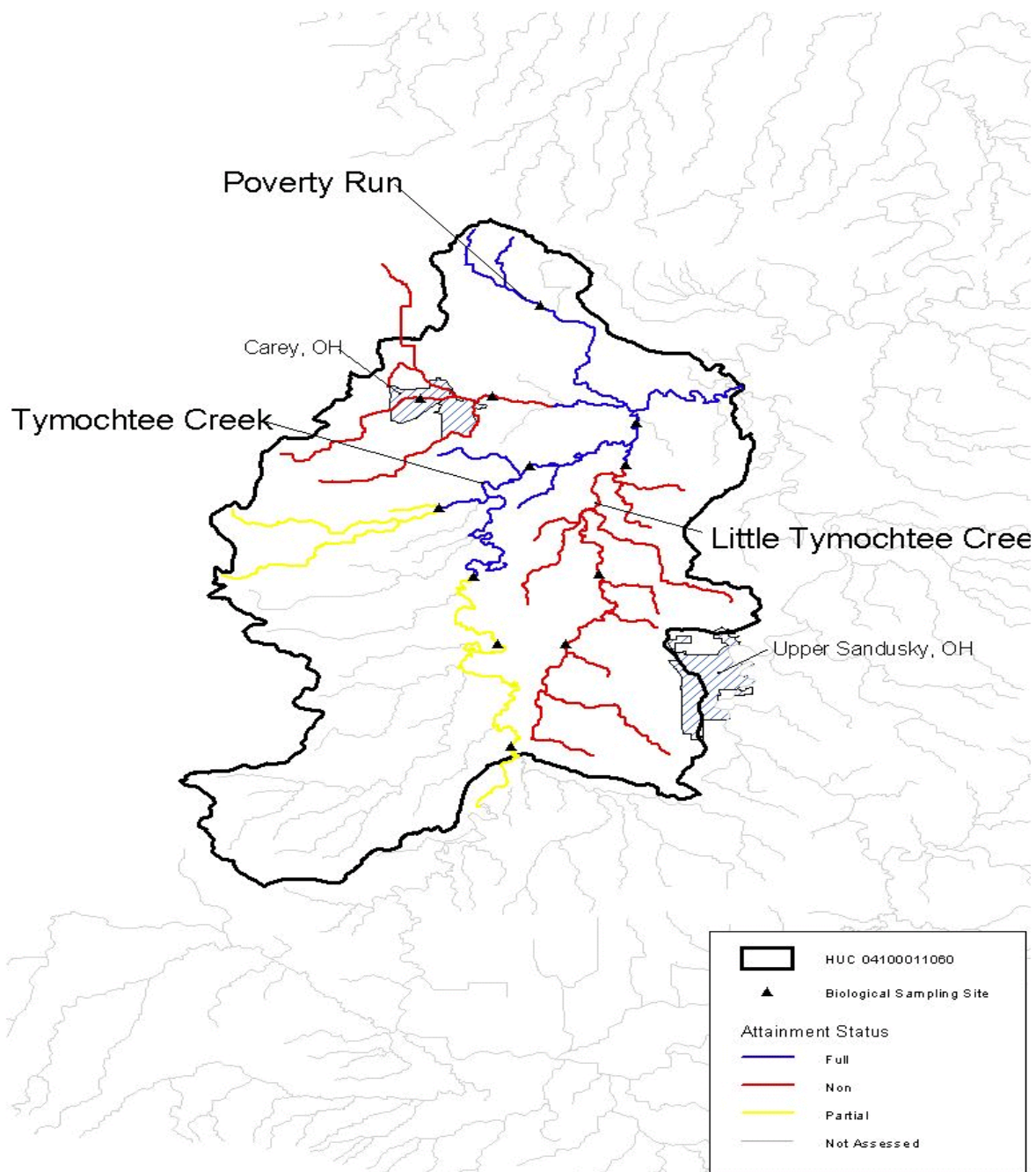


Figure 6: Lower Tymochtee Creek assessment unit (HUC 04100011-060)

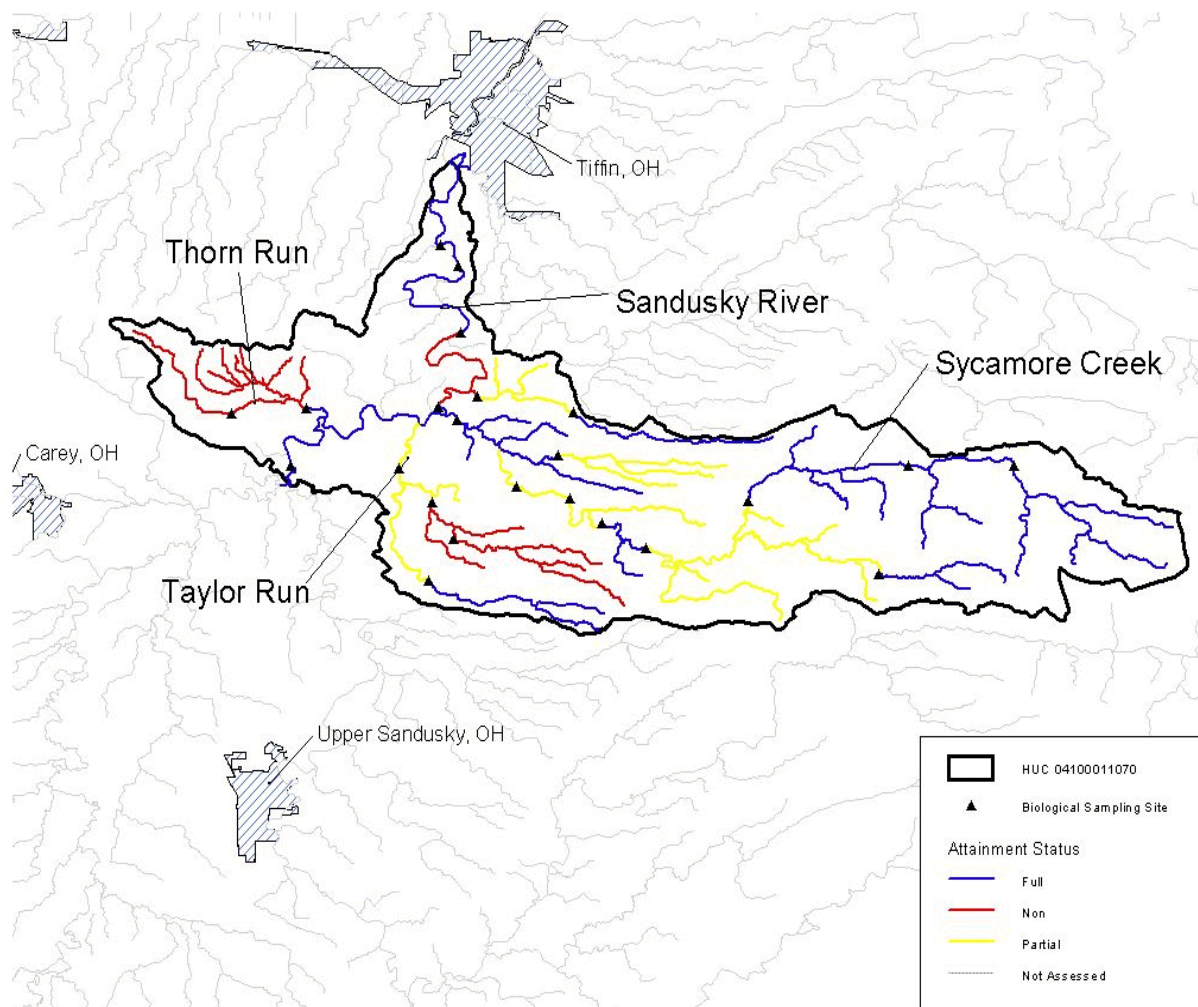


Figure 7: Mexico assessment unit (HUC 04100011-070)

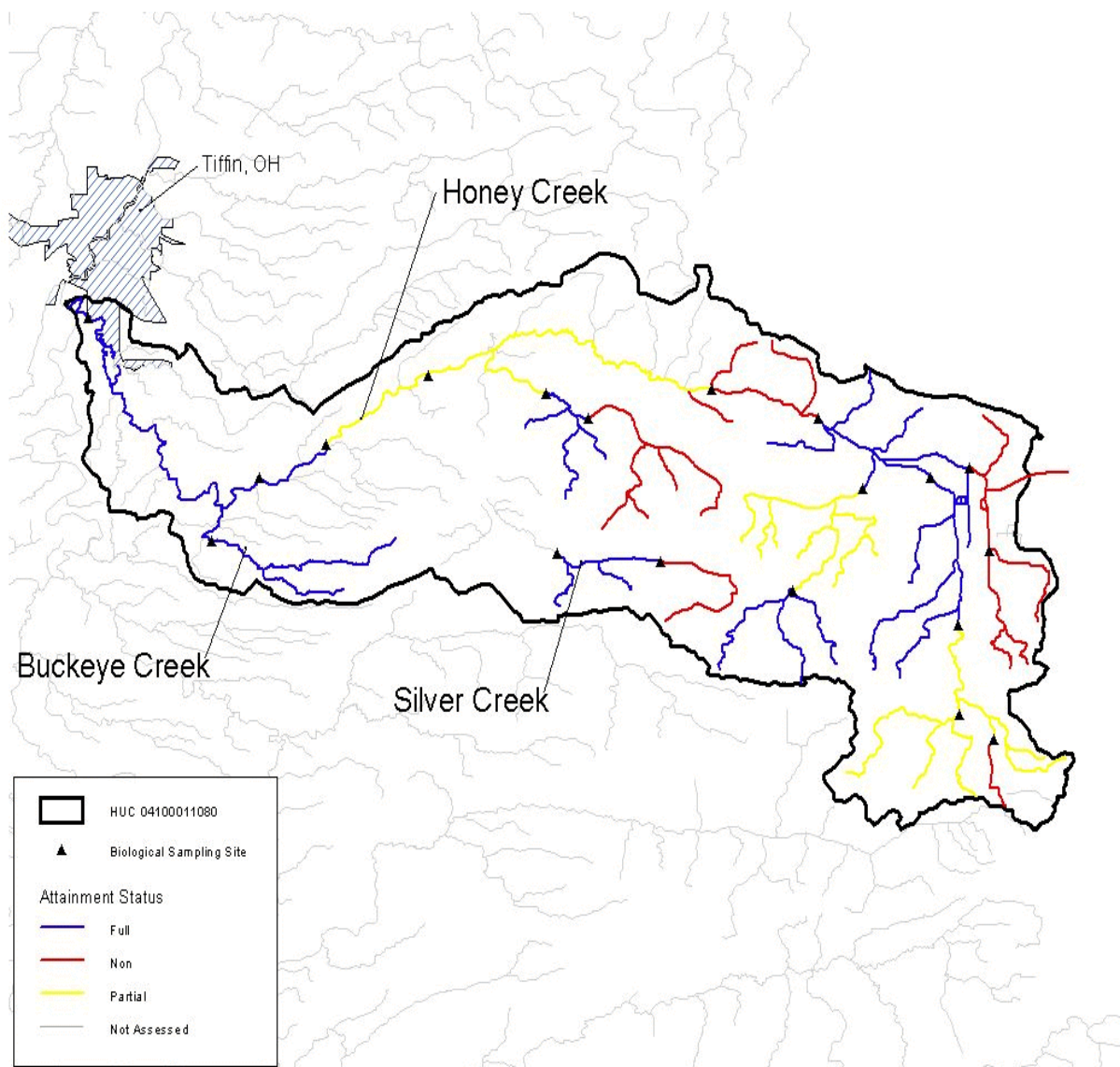


Figure 8: Honey Creek assessment unit (HUC 04100011-080)

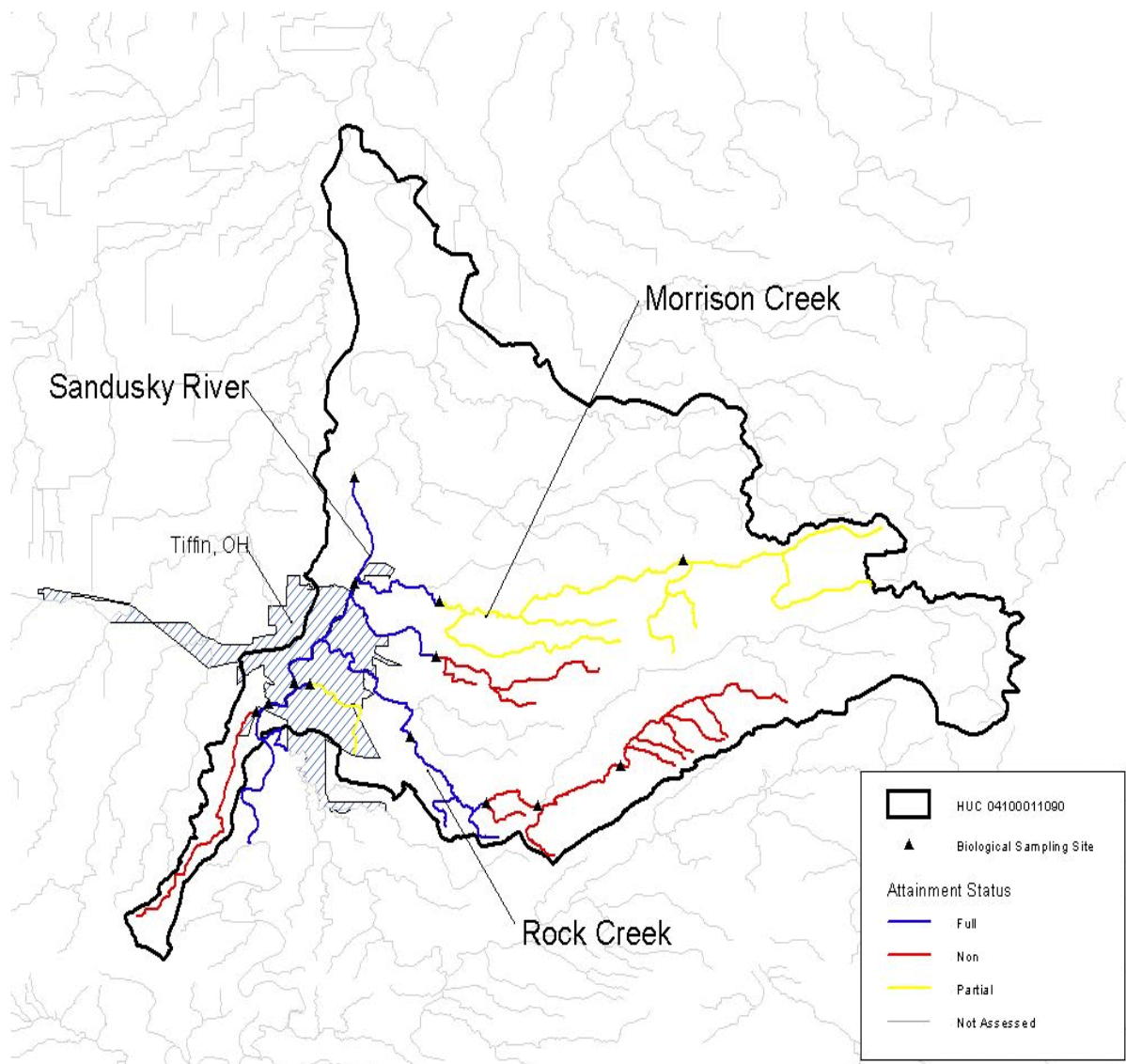


Figure 9: Tiffin assessment unit (HUC 04100011-090)