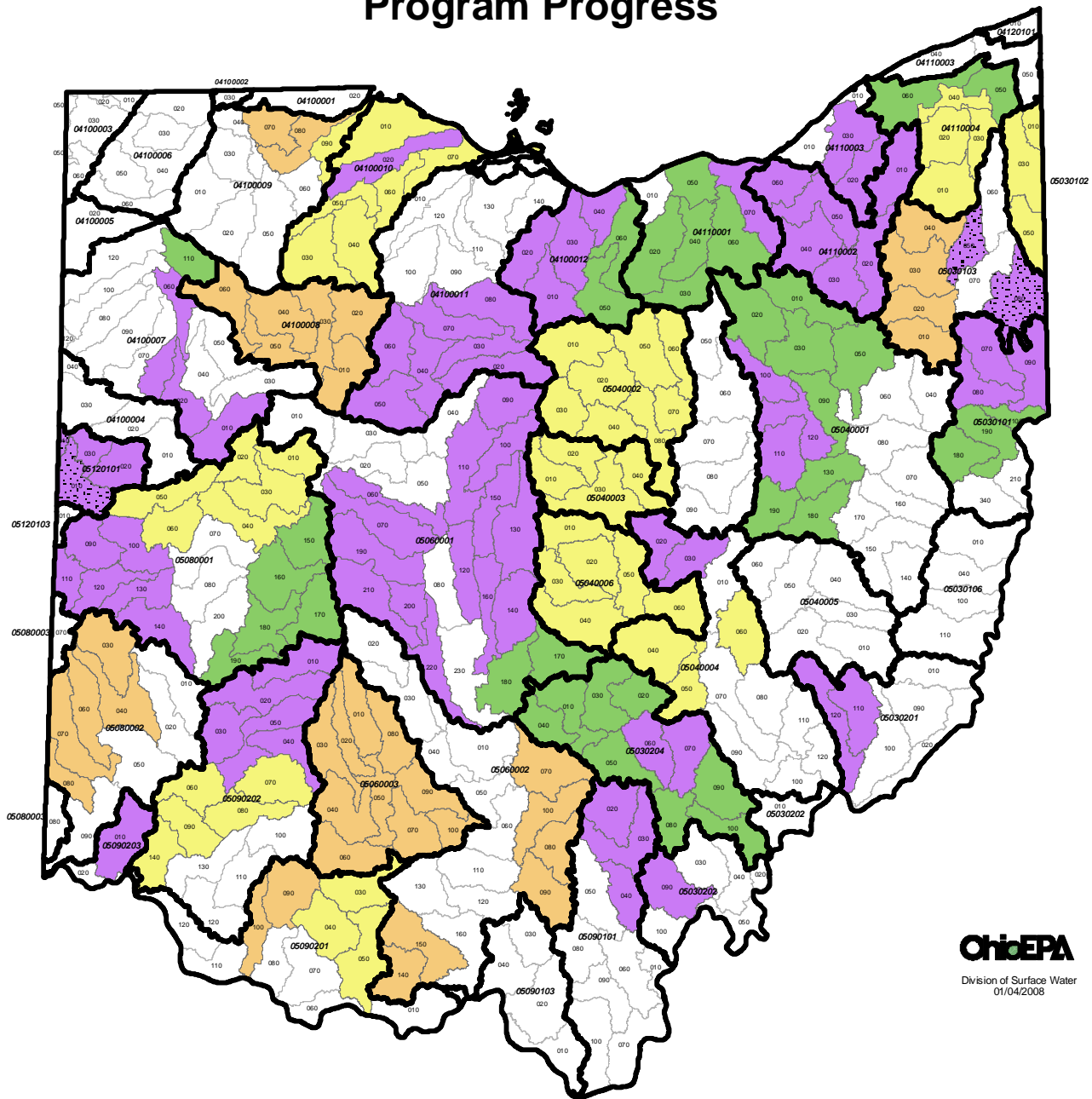







Ohio Total Maximum Daily Load Program Progress



OhioEPA
Division of Surface Water
01/04/2008



Total Maximum Daily Load (TMDL) Status (Watershed Name in Italics)

- 
Final report approved by USEPA; currently being implemented by watershed groups, Ohio EPA, others
Auglaize R (upper), Beaver Cr (Wabash R), Big Darby Cr, Big Walnut Cr, Bokes Cr, Chagrin R, Cuyahoga R (upper, middle, and lower), Euclid Cr, Huron R, Leading Cr, Little Beaver Cr, Little Miami R (upper), Mahoning R (bacteria), Mill Cr (Ohio R), Mill Cr (Scioto R), Monday Cr, Old Woman Cr, Olentangy R, Plum Cr (Rocky R), Raccoon Cr (upper), Sandusky R (upper), Stillwater R, Sugar Cr (bacteria & aquatic life), Sunday Cr, Toussaint R, Wabash R, Wakatomika Cr
 - 
TMDL nearing completion; some implementation may be initiated
Black R, Grand R (lower), Hocking R, Mad R, Powell Cr, Rocky R (bacteria), Tuscarawas R, Vermilion R, Walnut Cr
 - 
Load analysis in progress
Blanchard R, Fourmile Cr, Indian Cr, Mahoning R (upper), Paint Cr, Salt Cr, Scioto Brush Cr, Swan Cr, Twin Cr, Walnut Cr, White Oak Cr, Yellow Cr
 - 
Watershed assessment in progress
Grand R (upper), Great Miami R (upper), Jonathan C, Kokosing R, Lake Erie Tribs. (from Maumee R to Toussaint R), Licking R, Little Miami R (lower), Lower Maumee R Tribs, Mohican R, Moxahala C, Ohio Brush Cr, Portage R, Pymatuning R, Salt C (Muskingum Trib.)
 - 
Federal TMDLs completed
Wabash R, Mahoning R (bacteria)
- 8-digit Hydrologic Unit Boundary

11-digit Hydrologic Unit Boundary