

Directions

From the North:

Travel south on I-71, and take the Broad Street exit. Turn right toward downtown. Turn left on Third Street, right on Rich Street, and right on Front Street.

From the South:

Travel north on I-71 to I-70 East. Take the Front Street exit, and turn left to travel north to Ohio EPA.

From the East:

Travel west on I-70, take the Fourth Street exit. Turn left on Rich Street, then right on Front Street.

From the West:

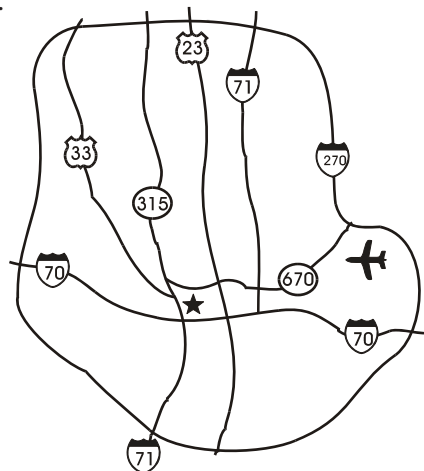
Travel east on I-70, and take the Front Street exit. Turn left to travel north to Ohio EPA.

From the Airport:

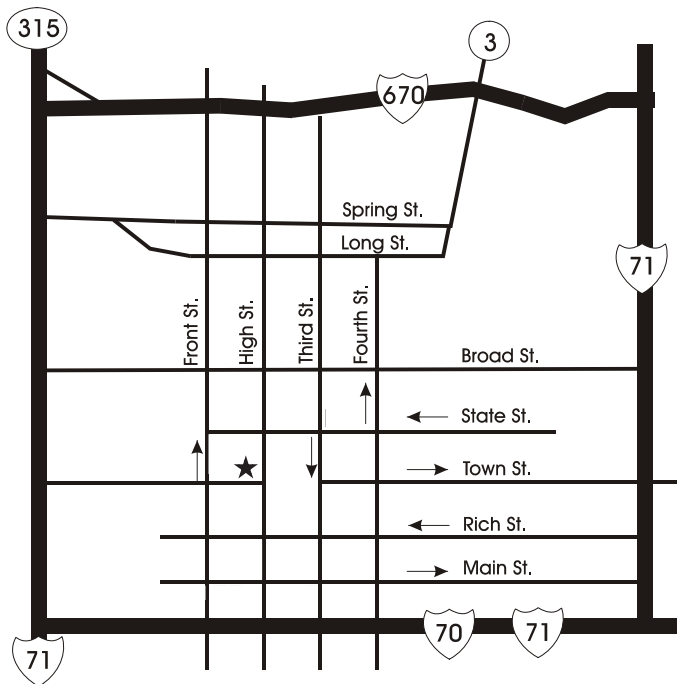
Travel west on Airport Drive to Leonard Avenue. Turn right onto I-670 and travel west toward downtown.

Take Exit 4B U.S. 23 South Third St. and continue south on Third Street to downtown.

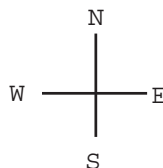
Travel south on Third Street to Rich Street. Turn right on Rich Street and right on Front Street.



Maps are not to scale



★ Lazarus Government Center



Produced by Ohio EPA's
Public Interest Center

www.epa.ohio.gov

Ohio EPA is an Equal Opportunity Employer
Printed on recycled paper
Revised 7/11



A Visitor's Guide to the Lazarus Government Center

50 W. Town Street, Suite 700
Columbus, Ohio 43215
(614) 644-3020



Office Hours

Ohio EPA's business hours are Monday through Friday, 8 a.m. to 5 p.m. To ensure that your visit with us is as productive as possible, call (614) 644-3020, and the appropriate employee will be happy to make an appointment with you.

When You Arrive

Upon your arrival, please sign in at the street-level security desk. An attendant will escort you to Ohio EPA's receptionist.

No Smoking Please!

While you visit with us, we ask that you respect our no-smoking policy, which is in effect throughout the building.

Building Features

Restrooms are conveniently located on each floor. Ask the receptionist for directions to the employee break room and vending machines.

Parking

There is no designated parking for staff or visitors at the Lazarus Government Center. There are many parking lots and meters near our office. Go to www.epa.ohio.gov/Directions.aspx for more information.

Mailing Address

Send all mail to:

Ohio EPA
P.O. Box 1049
Columbus, Ohio
43216-1049

Ohio EPA Directory

Area code is 614 unless otherwise noted

Fifth Floor

Front Desk
644-3020
Central District Office
728-3778 or 1-800-686-2330
Legal
644-3037
Operations & Facilities
644-2089

Sixth Floor

Office of Information Technology Services
644-2990
Division of Materials & Waste Management
644-2621

Seventh Floor

Director's Office
644-2782
Equal Employment Opportunity Office
644-3553
Employee Services
644-2100
Fiscal Administration
644-2339
Public Interest Center
644-2160
Office of Compliance Assistance & Pollution Prevention
644-3469
Office of Environmental Education
644-2873
Office of Labor & Safety
644-2782
Division of Air Pollution Control
644-2270
Division of Drinking & Ground Waters
644-2752
Division of Environmental Response & Revitalization
644-2924
Division of Environmental & Financial Assistance
644-2798
Division of Surface Water
644-2001

Other Ohio EPA Numbers

Division of Environmental Services
644-4247 (Reynoldsburg)
Northeast District Office, Twinsburg
(330) 963-1200 or 1-800-686-6330
Northwest District Office, Bowling Green
(419) 352-8461 or 1-800-686-6930
Southeast District Office, Logan
(740) 385-8501 or 1-800-686-7330
Southwest District Office, Dayton
(937) 285-6357 or 1-800-686-8930

Ohio EPA's Vision:

The Ohio Environmental Protection Agency is a trusted leader and environmental steward using innovation, quality service, and public involvement to ensure a safe and healthy environment for all Ohioans.

Ohio EPA's Mission:

To protect the environment and public health by ensuring compliance with environmental laws and demonstrating leadership in environmental stewardship.

Ohio's citizens depend on Ohio's environment — the air we breathe, the water we drink, the ground upon which we build our homes and grow our food. Keeping the environment clean and healthy is the job of the Ohio Environmental Protection Agency. In addition to our Central Office, Ohio EPA has five district offices to manage our state's pollution control programs efficiently at the local level.