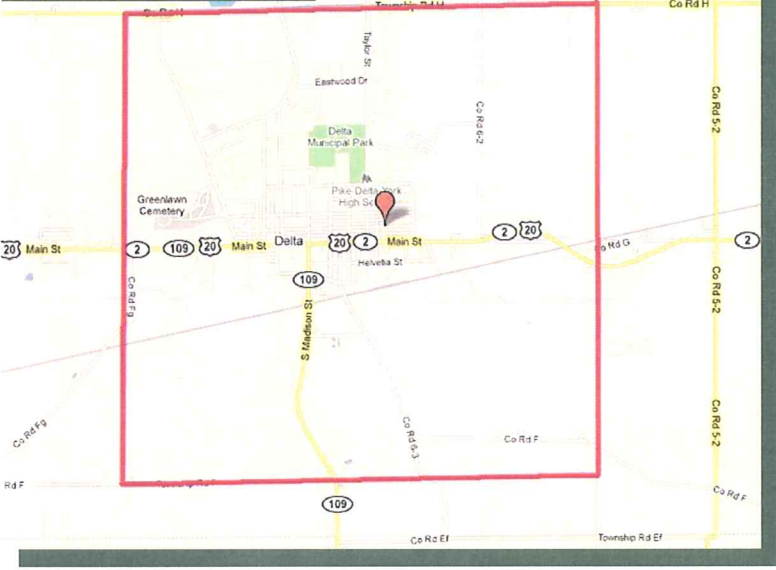
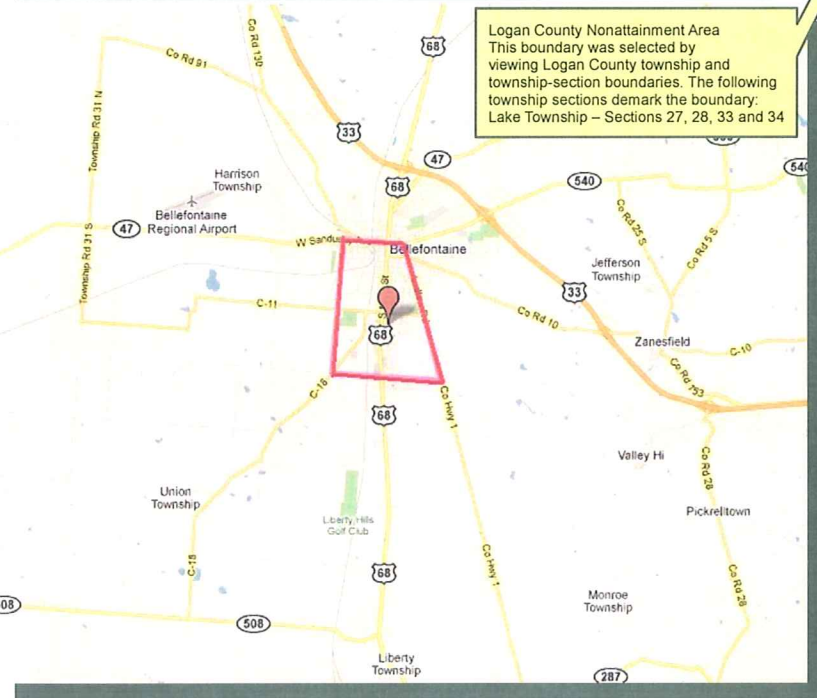


Ohio 2008 Lead (0.15 µg/m³) Nonattainment Areas 12/31/2010

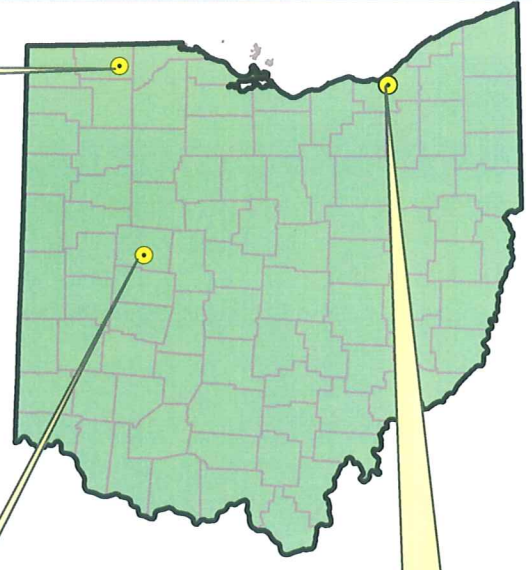
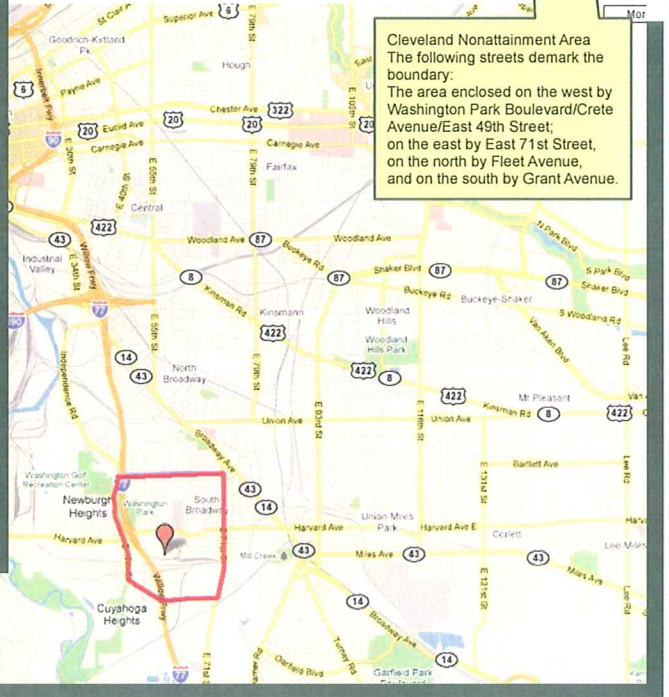
Fulton County Nonattainment Area
This boundary was selected by viewing Fulton County township and township-section boundaries. The following township sections demark the boundary:
York Township – Sections 12 and 13
Swan Creek Township – Sections 7 and 18



Logan County Nonattainment Area
This boundary was selected by viewing Logan County township and township-section boundaries. The following township sections demark the boundary:
Lake Township – Sections 27, 28, 33 and 34



Cleveland Nonattainment Area
The following streets demark the boundary:
The area enclosed on the west by Washington Park Boulevard/Crete Avenue/East 49th Street,
on the east by East 71st Street,
on the north by Fleet Avenue,
and on the south by Grant Avenue.




 Nonattainment Area
 Ambient Air Monitor